



ORACLE®

**Enkitec
Exadata CAB Presentation**

Presenter: Kerry Osborne
June 14-15, 2011

Our Exadata Experience



NORMAN ROCKWELL
High Dive

- How it Started
 - Intellectual Curiosity
- Timeline
 - Open World 2009 – Interest Peeked
 - Jan 2010 – Decision Made
 - Mar 2010 – Oracle agreed to sell us 1
 - May 2010 – Exadata Arrived (V2)
 - Jun 2010 – “Production”
 - Jul 2010 – Agreed to Write Book
 - Mar 2011 – Upgrade (X2)

Our Exadata Experience



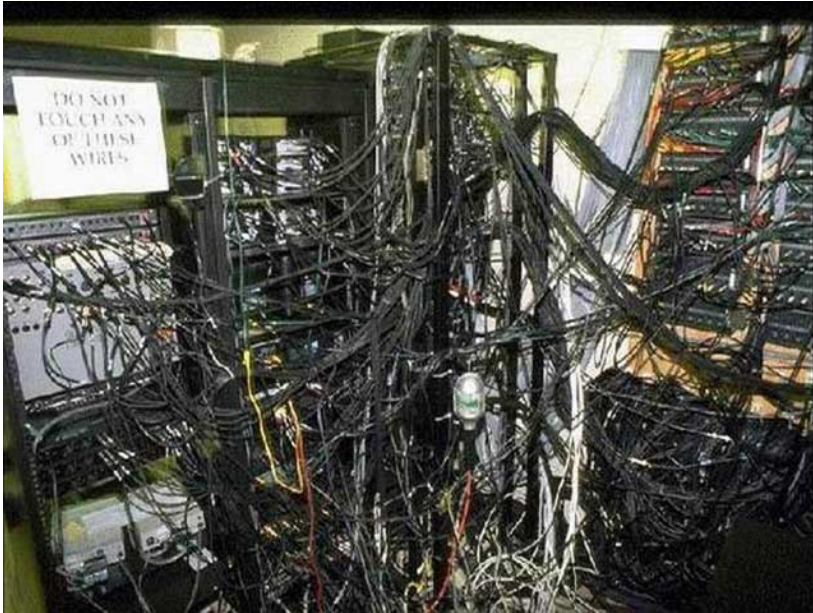
- Our Configuration
 - Single V2/X2-2 half rack
 - High Capacity
 - Split into two clusters (V2/X2)
 - 11.2.0.2 w/ BP6 & 11.2.2.3.2
 - Older versions back to 11.2.0.1

Our Exadata Experience



- Databases
 - POC, SANDBOX, DEMO, ...
 - 500 Gigs – 10 TB
- Applications (many)
 - DW, OLTP, Mixed
 - Retail
 - Secure Logistics
 - Rewards Programs
 - Telco
 - Utilities
 - Health Care
 - Mortgage Processing
 - Packaged Aps
 - PeopleSoft, Ebiz, Informatica

Our Exadata Experience



- Installation
 - V2 - did it ourselves manually
 - X2 – upgrade we used OneCommand
- Deployments
 - Some as quick as a couple of weeks
- Migration Methods
 - IMP / IMPDP
 - Flat Files (External Tables)
 - ASM Rebalance
 - CTAS via dblink
 - Golden Gate
 - RMAN Duplicate
 - Transportable Tablespaces

Our Exadata Experience



- Backup
 - Usually IB based
 - Oracle Secure Backup
 - Net Backup
 - Networker (Legato)
 - Oracle Needs Reference Architecture
- HA
 - Get Two (see patching)
 - Dataguard most common
 - Golden Gate

Our Exadata Experience



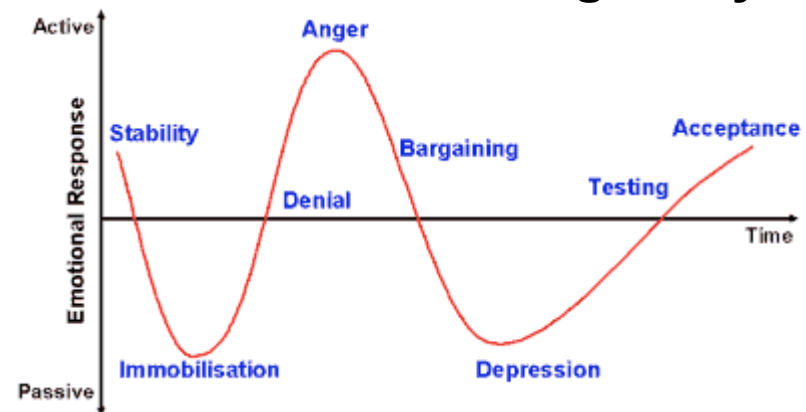
- Patching
 - Still Scary But Getting Better
 - Much more consistent since 11.2.0.2
 - BP's are easier to apply and track
 - BP's easier to test – separate DB home
 - Storage and DB patches related
 - Oracle Needs to Slow Down (QA)
 - Storage Patches Do Too Much
 - OS/Firmware/cellsrv
- Monitoring
 - Still Somewhat Difficult
 - Metrics Could Be Better
 - Add Clear Cut Smart Scan Flag
 - Not All Bad Though

Our Exadata Experience



- Performance
 - OLTP - Good
 - DW – Awesome!
 - Mixed – Very good

The Kübler-Ross grief cycle



First Exposure to Exadata

Our Exadata Experience

Performance: Telco Provider

- Customer Runs Dell, 16 Core Machines in Multiple RAC Instances
- Very High Volume of OLTP and Data Warehouse Type Queries on Same Database
- Performance Differences Were Too Excessive to Graph

SQL	Current	Exadata	Times Faster
Process 1: 6-Month Data Volume	52 min	19.5 sec	160 x
Process 2: 3-Month Data Volume	51 min	11.5 sec	269 x
Process 3: 1-Year Data Volume	50 min	37.5 sec	81 x
Process 4: 2-Month Data Volume	48 min	9.4 sec	308 x
Update SCN_CALL_PARTY_LOG	13 min	1.05 sec	744 x
Update SCN_CALL_PARTY_IDENT_LOG	7 min	.23 sec	1871 x
Select SCN_CALL_PARTY_EXTDATA_LOG	6.75 min	.47 sec	868 x

Where Do We Go From Here



- Up (of course)
 - Game Changing Performance
 - Most Successful Product Launch
 - Being Widely Adopted
 - Across Many Industries
 - SAP Recently Announced Support



Questions?

Contact Information : Kerry Osborne

kerry.osborne@enkitec.com
kerryosborne.oracle-guy.com
www.enkitec.com



Specialized
Exadata

